

PAN/TILT THERMAL & COLOR CAMERAS

- All Weather Stainless Steel Rugged Housing
Anti-corrosion, Anti Rust, resist high humidity and salt water.
Special Reflective paint to reduce heat by 15 degree.
- 128 preset positions for perimeter scanning, Tour function
- Pelco-D protocols , can be integrated with any other CCTV system.
- Environmentally sealed and dry nitrogen filled
- Image overlay combines thermal and video image
- The EV3000 EMCCD colour night vision camera provides high resolution full colour images from full Sunlight down to quarter Moonlight, and thereafter monochrome images down to Starlight.

Thermal Imager

- Cooled 3-5 micron InSb detector
- 640x480 resolution
- DFOV Lenses 50mm-250mm
- Unmatched image quality with Digital Detail Enhancement

Pan/Tilt resolution

High performance, brushless, maintenance-free step motors provide very precise, extremely effective motion control with preset and 0-360 degree endless rotation

CCTV software with TCP/IP

- Full control of Thermal / Day-Night / Pan/Tilt
- Using standard Protocol Pelco-D

Day/Night Camera

- 1/2" High-Resolution EMCCD
- 0.000008 lx (color)
- Lens 12-660mm 55X optical zoom
30-1680mm 2.5X on
- Reproduces full colour, full motion images in starlight conditions

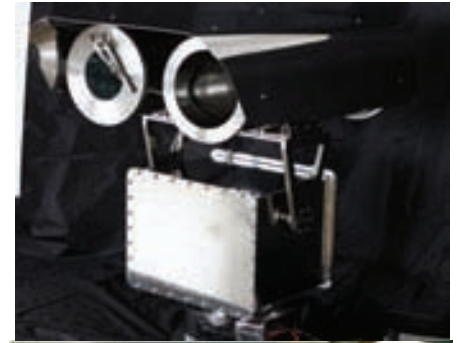
Sensor Platform

- Heavy Duty, Stabilized Pan/Tilt
- Stainless Steel Enclosure,

This product can be used in any marine applications, harsh environment. Anti-rust full sealed housing/ and Pan-Tilt. Great for shore, sea ports or ship due to its material Stainless Steel 316 against corrosion.

Options

- * Digital real time video stabilization
- * Washer 5 or 10 ltr

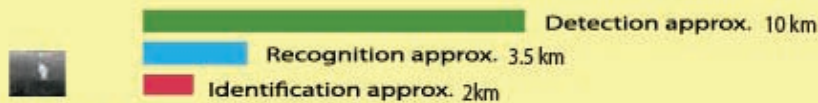


Eagle Vision EV3000
Dual Camera System
Thermal and
Color EMCCD

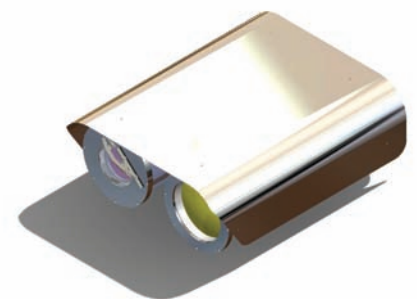
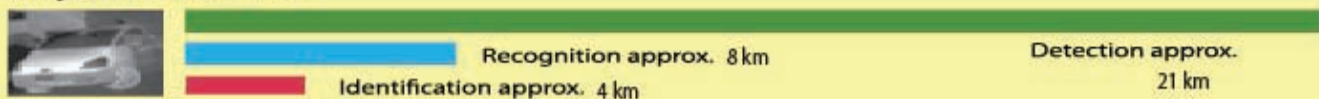
FEATURES		EV3000-D-IR-250
Thermal Imaging	Detector type Pixel Count (Resolution)	Indium Antimonide (InSb); 640x480 detector , 15µm micron pitch, high-resolution has 4-times the picture clarity of cameras that use medium format 320x240
	Spectral Response	3 - 5 µm
	Image processing	Digital Detail Enhancement (DDE) On/Standby/Off, Auto & manual Level, manual Gain, Polarity, reticle on/off/select, Non-Uniformity Correction, Change FOV, Focus
	FOV (H X V)	11.0° x 8.2° (WFOV) to 2.2° x 1.6° (NFOV)
	Digital Zoom	2X, 4X
	Focal Length (mm)	50x250mm
Video	Sensor	1/2 inch EM-CCD with electron multiplication High sensitivity color / monochrome camera
	Field of View (D x H x V)	40.84° to 0.69° (12-660mm) 15.12° to 0.27° (30-1580mm)
	Zoom	Optical: 55X 12-660mm/30-1680mm 2.5X on/off
	Illumination	Minimum illumination 0.000008 lx (color)
Pan & Tilt	Azimuth Control	360° continuous
	Elevation Control	± 90°
	Pan & Tilt Slew Rate	0 seconds to 60 seconds
	Pointing Accuracy	Pan ± 0.1° / Tilt ± 0.1°
Power	Power Source	10 - 28 VDC through supplied 110 /220 VAC power supply
Environmental Characteristics	Operating Temperature	-40° C to 60° C
	Environmental Sealing	Fully ruggedized/Mil-STD-810E, NEMA 4 and IP68

Ev3000-D-250: range performance 250mm lens Resolution 640 x 480

Man: 1.8 m x 0.5 m



Object: 2.3 m x 2.3 m



Eagle Vision EV3000
Dual Camera System
Thermal and
Color EMCCD

Digital Detail Enhancement (DDE) video optimization algorithms. DDE is a proprietary FLIR technology that brings out unmatched image detail. High-resolution has 4-times the picture clarity of 320x240 format



United Vision Solutions
A world without darkness

www.LongRangeCamera.com
10 Center St., Suite 401 & 402
Chicopee MA 01013 USA
info@unitedvisionsolutions.com



VISIBLE

EMCCD

United Vision Solutions
A word without darkness

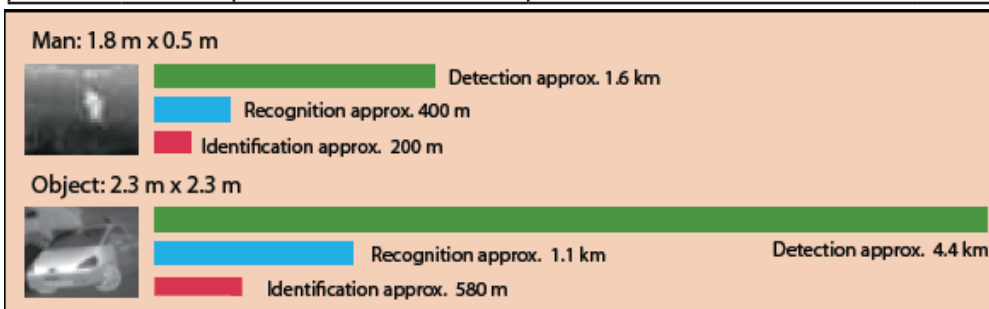
413-592-8477

WWW.LongRangeCamera.com

**10 Center St., Suite 401 & 402
Chicopee MA 01013 USA**

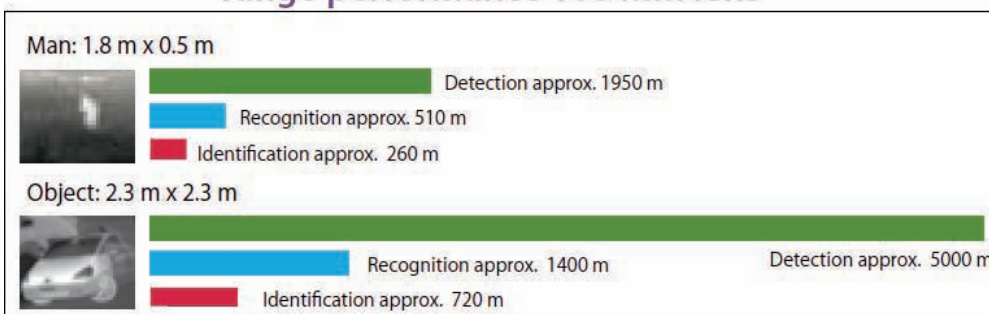
info@unitedvisionsolutions.com

FEATURES		EV3000-D-IR-100	EV3000-D-IR-100H
Thermal Imaging	Detector type	Focal Plane Array/ uncooled microbolometer	Focal Plane Array/ uncooled microbolometer
	Pixel Count (Resolution)	324 X 256	644 X 512
	Spectral Response	7.5 to 13 μm	
	Image processing	Automatic Gain Control (AGC), Digital Detail Enhancement (DDE)	
	FOV (H X V) Digital Zoom Focal Length (mm)	7° (H) x 5° (V) 2X, 4X (100H model) 100 mm	
Video	Sensor	1/2 inch CCD High sensitivity color / monochrome camera or 1/2 inch EMCCD	
	Field of View	40.84° to 0.69° (12-660mm) 15.12° to 0.27° (30-1580mm)	
	Zoom	Optical: 55X 12-660mm/30-1680mm with 2.5 extender	
	Illumination	(color) 0.03 lx / 0.0002 lx with sensup - (Monochrome) 0.004 lx / 0.00003 lx with setup	
Pan & Tilt	Azimuth Control	360° continuous	
	Elevation Control	-90° +45°	
	Pan & Tilt Slew Rate	0 seconds to 60 seconds	
	Pointing Accuracy	Pan ± 0.1° / Tilt ± 0.1°	
Power	Power Source	10 - 28 VDC through supplied 110/220 VAC power supply	
Environmental Characteristics	Operating Temperature	-40° C to 60° C	
	Environmental Sealing	Fully ruggedized IP66	



Ev3000-D-IR100

range performance 100 mm lens



Ev3000-D-IR100H